

President's Message

Summer is in full swing in the South Side Slopes. There are lots of great things happening in the neighborhood!

After a few stops and starts by the City on the renovation of the Oakley Way Steps, the work is on track for mid-summer (see p. 6). These repairs will allow Mosaic Steps volunteers to assemble the mosaic art before this year's StepTrek. We will be sharing opportunities to create a riser.

Another ongoing project coming to fruition is the long-time-coming Church Route signage being erected permanently along the route (see p. 7). If you're feeling like a stroll through the neighborhood, passing by many of the lovely churches along the way, download the step-by-step printable route narrative from the southsideslopes.org website.

The Friends of South Side Park, a new group of diverse community members has recently formed and started working on priorities and projects to improve the park (see p. 2). They have got a lot of great ideas and energy, so stay tuned.

Lastly, I'd like to remind you about the upcoming SSSNA Summer Picnic happening on Tuesday, July 12 at 6:30 (see p. 2). This year, it will be held at Bandi Schaum Community Garden. So, if you've not had a chance to visit and explore the garden, this is your opportunity. Come hang out and have some fun with your neighbors. Hope to see you there!



Brian Oswald,
President

South Side Slopes Neighborhood Association



IN THIS ISSUE

President's Message	[1]
Friends of South Side Park	[2]
Neighborhood Picnic	[2]
McArdle Roadway Gateway	[3]
Business Spotlight: Garvey's	[4]
Brashear Summer Programs	[4]
Youth Orienteering	[5]
Oakley Mosaic	[6]
Farmer's Markets 2016	[6]
South Side Social	[7]
Church Route Signage	[7]
Calendar	[8]

"Neighbors working together to make the Slopes a more livable, beautiful, and safe community."

Friends of South Side Park Springs Into Action



The newly formed group Friends of South Side Park (FOSSP) is an emerging committee that brings together a broad group of South Side Park users for park planning and advocacy. In addition to being a neighborhood treasure, South Side Park has attracted increasing interest from outside groups as well.

During nearly every rainfall or snowmelt, excess water flows into the municipal sewer systems causing untreated sewage and storm water to overflow into our rivers and streams. The 65-acres of South Side Park has been identified as one of the top three priority locations in the City of Pittsburgh to manage storm water runoff so it does not result in sewer overflows. As a result, the park holds great potential for future projects and investments.

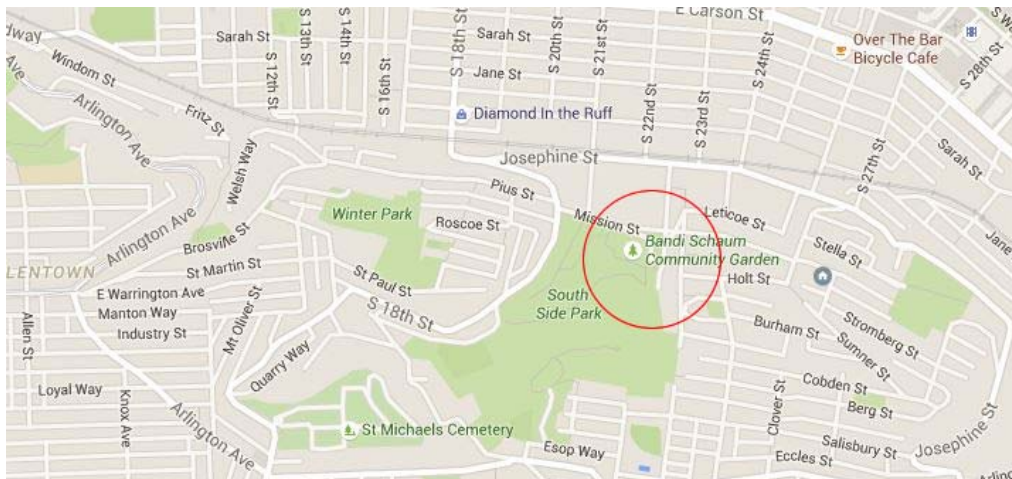
The primary goal of Friends of South Side Park is to engage park users to create a long-term plan for the park that is community-driven. Stay tuned for more news and information coming from this collaboration of community groups and members regarding the park.

If you would like to join the Friends of South Side Park email list or learn more, please email SSParkPgh@gmail.com.

Neighborhood Picnic: July 12 at Bandi Schaum Garden

Celebrating great neighbors and our thriving neighborhood at this year's SSSNA picnic Tuesday, July 12 at 6:30 p.m. at Bandi Schaum Garden, just off Mission Street. Burgers (regular and veggie) and hot dogs will be provided. Bring an appetizer, salad or dessert for this potluck and meet up with your neighbors for a relaxing evening together. Hang out with old friends, make a few new ones and check out the community garden, or take a stroll through South Side Park. See you there, neighbor!

NEW LOCATION THIS YEAR: BANDI SCHAU M GARDEN



From 18th Street, turn on to Mission Street. Just beyond first bridge and across from PWSA Pumping Station, turn right in to parking lot. Garden is a short walk up the lane. (Limited parking is available at top of hill, near garden).

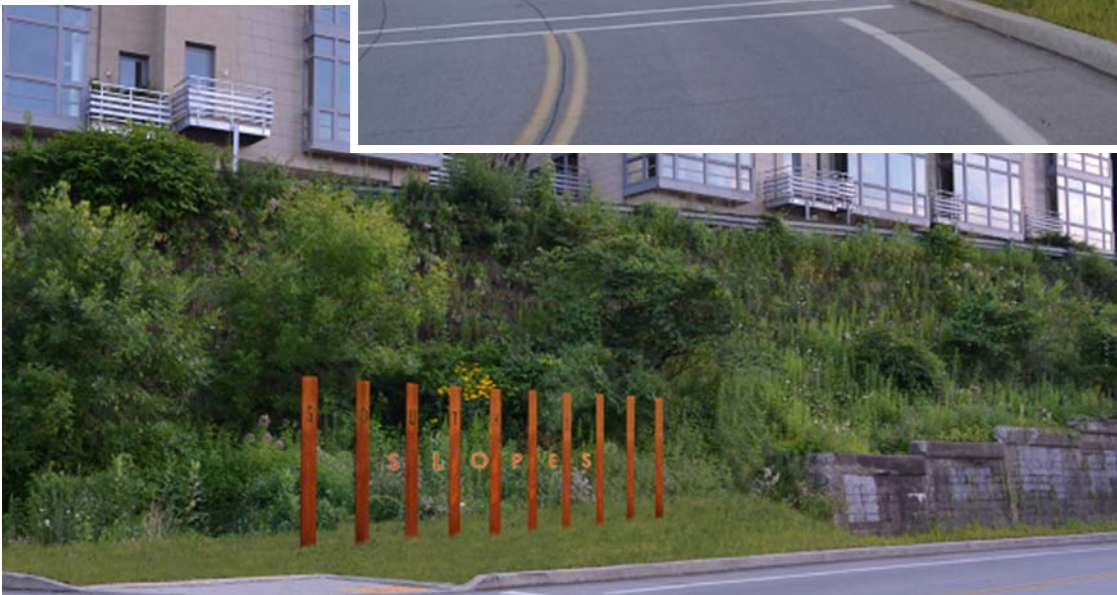
McArdle “Gateway” Welcomes All to the South Side

You may have noticed that the South Side is home to yet another impressive installation that marks a much used gateway to our neighborhood. Led by Slopes resident Peter Kreuthmeier of Loysen+Kreuthmeier Architects, the new marker, installed at the intersection of PJ McArdle Roadway and Windom Street was funded by the South Side Local Development Company, an organization that served the South Side from 1982 -2012.

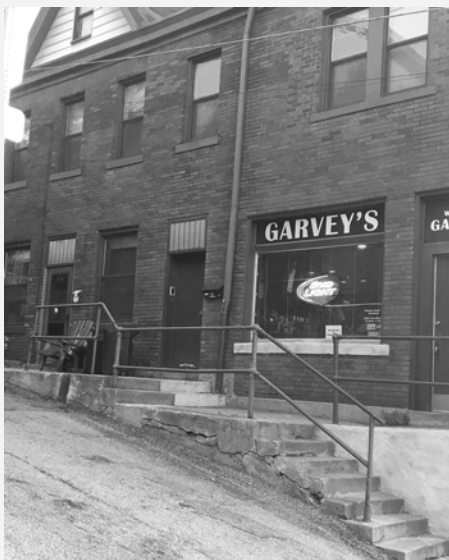
“Similar to other ‘welcome to the neighborhood ‘ markers we’ve collaborated on with the SSSNA, the Windom/McArdle Gateway makes use of cor-ten steel as a primary material-to recall the historic industrial lifeblood of the neighborhood. As this site is an entry point to both the South Side Flats and South Side Slopes, depending on the direction of travel, we wanted to recognize this, to incorporate the motion of the viewer,” Mr. Kreuthmeier explained. Although the piece is static, when approaching the South Side, it reads ‘South Side.’ Likewise, in the other direction, it reads ‘South Side Slopes.’ For such a simple effect, there was quite a bit of study to get the geometry just right.

Mr. Kreuthmeier continued, “Credit and thanks go to our interns, Jonathan Tomko and Mary Waelder, for their magnificent efforts on this. Thanks, too, to the installation team, from Standard and Custom, who made it look easy.”

The SSSNA and the Department of Public works provided help along the way in preparation for the installation. There will be plantings and other last minute finishes done this summer. Drive by and take a look! (The U.S. Postal Service has kindly agreed to relocate their relay mail box from the site.)



These two photos are renderings of the final look from both directions on McArdle Roadway.



GARVEY'S

A SLOPES STAPLE

Have you visited the hidden gem that is Garvey's Bar at Mission and Sterling Streets? If not, you're missing a hidden gem of a dive bar in the Slopes.

Colorful personalities, video games, pinball, and a unique duck pin bowling game are all available for your entertainment. Pittsburgh sports generally adorn the flat screens, but you can also challenge the locals with your Jeopardy skills every night.

If "Mustache Mike" asks if you want a big or a small beer, go for the big..... don't worry it won't set you back enough to hurt.

Support this Slopes business!

GARVEY'S

2306 Mission Street
Pittsburgh, PA 15203
412.481.2002

Learning and Fun for Kids in South Pittsburgh

Through summer camps and afterschool programming, the Brashear Association's ALEC (Allentown Learning & Engagement Center) provides a safe and positive learning environment for students in the South Pittsburgh area. Brashear is a wonderful resource for our community.

This summer there are several summer camps and programs for students in our neighborhood. Here is what's happening:

TECH CAMP | July 5-14

Want to code, tinker, invent and build? This is the camp for you! Great hands-on STEAM experiences with the Y Creator Space.

GO! CAMP | July 18-28

This camp is all about moving your body and taking care of it. Learn new dance moves, play fun sports and games, experiment with food and create new recipes!

OUTDOORS CAMP | August 1-11

You'll go on a hike, ride a bike, play games, kayak, geocache and experience nature with Venture Outdoors!

For more information, email arooke@brashearassociation.org or call 412.620.8262.



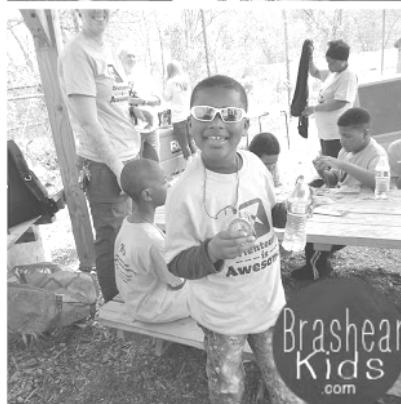
Youth Orienteering in the Park

We really could not have asked for better weather or a better activity for kids in our neighborhood, spending time in South Side Park having fun and learning a little too! On April 30, an excited group of youth from the Brashear Association's ALEC program in Allentown met at Bandi Schaum Community Garden for a day of orienteering.



Alexis Rzewski, from the Western Pennsylvania Orienteering Club taught the children how to use a compass, how to read a map, and finally how to use them together to walk the course. Armed with this knowledge, the orienteers took off into the park! There were even prizes—scavenger hunt-style—hidden along the way. Upon returning to the garden pavilion, the youth played with their prizes and enjoyed a hearty lunch courtesy of Sweet Peaches in Allentown.

The fun and educational day would not have been possible without participation from the Western Pennsylvania Orienteering Club and without the support of the Birmingham Foundation, who provided the funding for this program. As the kids' t-shirts read, "orienteering is awesome!"



Learn more about orienteering at the Western PA Orienteering Club's website: <http://www.wpoc.org>.

New location
this year!

The South Side Slopes Neighborhood Association (SSSNA)

invites you to join your neighbors at the annual

SUMMER PICNIC

Tuesday, July 12

6:30 p.m.

at

Bandi Schaum Community Garden

(off Mission Street, across from PWSA Pumping Station)

You're welcome to bring a covered dish, snacks, drinks or dessert.

Burgers, dogs and veggie burgers provided.

Oakley Way Mosaic Steps Update

Thanks to all our supporters for your patience. This summer, the South Side Slopes Neighborhood Association is working with the City of Pittsburgh Department of Public Works to repair the Oakley Way Steps using a grant from Allegheny County's Community Infrastructure and Tourism Fund (CITF). Concurrently, we will be organizing artist-led community workshops in July to hand out supplies and teach neighbors to create the 77 mosaic step risers.

Installation is tentatively planned for September. Artist Laura Jean McLaughlin will be attending the July 12 picnic with further details. Stay tuned

on our Facebook page and e-blast as we announce the dates for the workshops.

Farmers' Markets are Back for 2016!

The South Side is home to a wonderful farmer's market, running from summer through fall. The market, happening Tuesdays from 3 to 7 p.m. at the corner of 18th & Carson Streets, offers local residents quality, farm-fresh vegetables, meats, cheeses and baked goods as well as flowers and other handmade items.

In addition to the Citiparks South Side location, here is a list of other markets going on in nearby neighborhoods:

- **South Side Farmer's Market** (May 10-Nov. 15)
Tuesdays from 3 to 7 p.m. at lot on 18th & Carson Streets
- **Carrick Farmer's Market** (June 8-Nov. 16)
Wednesdays from 3 to 7 p.m. in Carrick Dairy District (1529 Brownsville Rd.)
- **Market Square Farmer's Market** (May 12-October 27)
Thursdays from 10 a.m. to 2 p.m. in Market Square, Downtown



South Side Social 2016: 2nd Year of Support for South Side Park

Residents of both the Flats and Slopes came together on April 2 for a second year in a row at the Steel Cactus for a lovely evening of delicious food, friends, and fun! The event raised approximately \$600 for continued improvements in South Side Park.

Proceeds allocated to South Side Park will bolster the ongoing work to battle and eradicate invasive plant species in the park.

Donate to South Side Park!

Go to: www.southsideslopes.org
(Click on Donate button—specify funds to be used in South Side Park).

Church Route Gets Permanent Signage

The South Side Slopes Neighborhood Association (SSSNA) is excited to announce the installation of signs marking the “Church Route,” a walking tour that goes up and down our unique stairways providing beautiful views of the city, and featuring glimpses of the eccentric hillside architecture and historic churches. For 10 years this route was a part of the SSSNA's annual StepTrek but the SSSNA decided to formalize the route into a permanently signed walk instead.

The signs are posted at intersections leading from the start of the route at 15th and E. Carson Streets. The Church Route travels up 15th Street eventually ascending many different stairways and adjacent to the historical church of the Slopes. St. Adalbert's, St. Michael's, St. Paul's, and St. Josephat's churches are highlights of the trip.

A narrative of the route is posted at: www.southsideslopes.org/steptrek/church-route. A brochure with a map and helpful navigation information will be printed this summer, and available at the South Side Chamber of Commerce office on 11th and Carson Streets. In addition to a map, the brochure will provide historical anecdotes about the churches and community as well ongoing improvements and changes to the neighborhood. Explore the Slopes and have fun!



STORE XPRESS.com
Indoor Climate Controlled Self-Storage
Proud to support the
South Side Slopes Neighborhood Association

*Special Offer for Residents of
South Side Slopes*
2nd MONTH FREE RENT

*Must present coupon at lease signing. May not be used with any other offer.



South Side Slopes
Neighborhood Association



APPROVED

Keep Trash Out of Sight, Stored in Cans with Lids - SouthSideSlopes.org

Support the SSSNA

Please help to support the SSSNA and its mission of “neighbors working together to make the Slopes a more livable, beautiful, and safe community.”

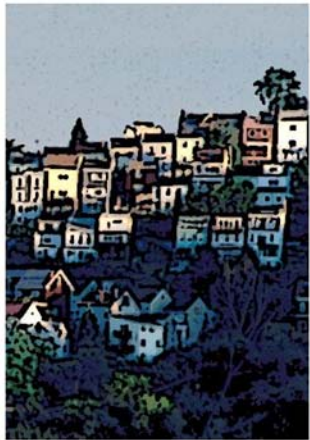
Donations are accepted through our website: southsideslopes.org
(click on the PayPal link).

To donate with a check, please make it out to SSSNA, and mail it to: SSSNA, P.O. Box 4248, Pittsburgh, PA 15203.

Access our website with your smartphone using the QR code to the right.



South Side Slopes Neighborhood Association
P.O. Box 4248
Pittsburgh, PA 15203



SOUTH SIDE
S L O P E S
NEIGHBORHOOD
ASSOCIATION

NON-PROFIT ORGANIZATION
US POSTAGE
PAID
PITTSBURGH PA
PERMIT NO 603

«AddressBlock»

CALENDAR OF EVENTS—2016

Tuesday, July 12 — Summer Picnic [Bandi Schaum Community Garden, Mission St., 6:30p.m.]

Saturday, October 1 — StepTrek [21st Street, Entrance to South Side Park]

Tuesday, October 11 — General Meeting & Elections [Brashear, 2005 Sarah St., 7p.m.]

Tuesday, December 13 — Holiday Party (St. Paul of the Cross Monastery, 7p.m.)

Interested in Advertising?

Each edition of the *South Side Slopes Quarterly* reaches more than 1,800 residents and businesses. Contact us at:
newsletter@southsideslopes.org.



facebook.com/southsideslopes



twitter.com/southsideslopes